

ITT Technical Institute
CJ2699
Criminal Justice Externship
Onsite Course

SYLLABUS

Credit hours: 4.5

Contact/Instructional hours: 135 (, 135 Externship Hours)

Prerequisite(s) and/or Corequisite(s):

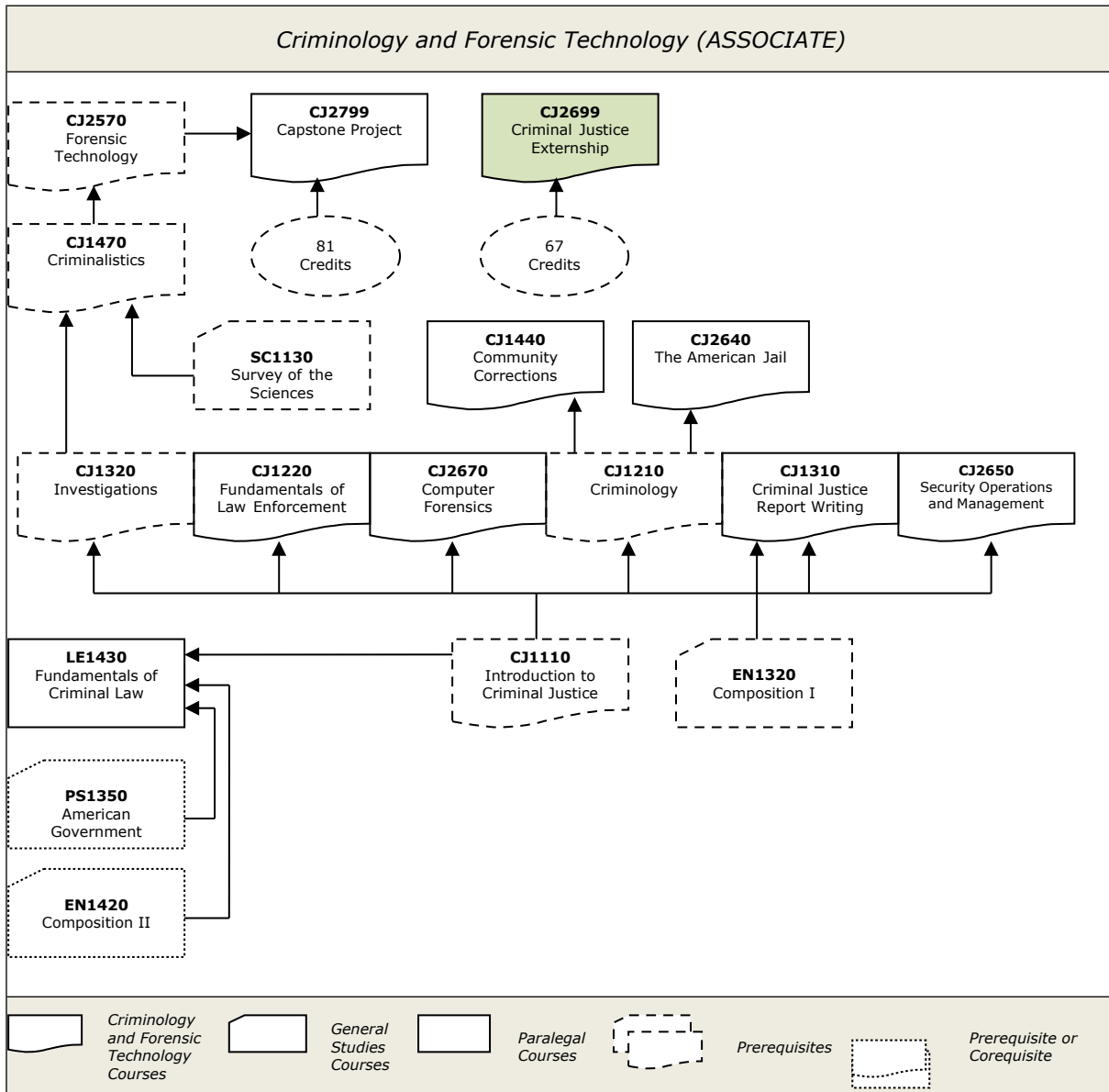
Prerequisites: Completion of a minimum of 67 credits earned in the program of study

Course Description:

This course provides students with an opportunity to apply knowledge and skills acquired in the program in a real world experience for 135 hours.

Where Does This Course Belong?

This course is offered in the sixth quarter of the program in place of criminal justice elective courses to allow students to get some on-the-job experience. The course consists of the student completing 135 hours of work on site in a criminal justice or related field environment.



Note: Refer to the catalog for the state-specific course information.

Syllabus: Criminal Justice Externship

Instructor:	_____
Office hours:	_____
Class hours:	_____

Major Instructional Areas

1. Practical application of criminal justice related knowledge, skills and abilities.
2. Working in a team and as a criminal justice professional.
3. Documenting work.

Course Objectives

1. Apply the knowledge, skills, and abilities learned in the Criminology and Forensic Technology program in a real-world environment.
2. Demonstrate professionalism in a criminal justice work setting.
3. Demonstrate the ability to perform as a team member in a real-world environment.
4. Document perceptions of the operations of a criminal justice agency or organization within the criminal justice field.
5. Apply problem-solving and critical thinking skills in a real-world environment.
6. Demonstrate skills, characteristics, and attitudes necessary for future employment in the field of criminal justice.

Course Outline

Note:

Unit	Activities
1—	• Weekly Log Submission (Faxed or Scanned Document)
2—	• Weekly Log Submission (Faxed or Scanned Document)
3—	• Weekly Log Submission (Faxed or Scanned Document)
4—	• Weekly Log Submission (Faxed or Scanned Document)
5—	• Weekly Log Submission (Faxed or Scanned Document)
6—	• Weekly Log Submission (Faxed or Scanned Document)
7—	• Weekly Log Submission (Faxed or Scanned Document)
8—	• Weekly Log Submission (Faxed or Scanned Document)
9—	• Weekly Log Submission (Faxed or Scanned Document)
10—	• Weekly Log Submission (Faxed or Scanned Document)
11—	• Weekly Log Submission (Faxed or Scanned Document) • Diary Submission • Employer Survey Submission

Instructional Methods

This course is an experiential learning event that will vary from agency to agency. Students will work under the supervision of the participating agency and monitored by the instructor and/or externship facilitator.

Instructional Materials and References

- **Student Textbook Package:** No textbook is provided for this course.
- **Other Required Resources:** No additional resources are required for this course.
- **Equipment and Tools:** No additional equipment and tools are required.

References

ITT Tech Virtual Library

Log on to the ITT Tech Virtual Library at <http://www.library.itt-tech.edu/> to access online books, journals, and other reference resources selected to support ITT Tech curricula. The Criminal Justice Program Links is a valuable resource area for students to use while they are performing their externship.

Course Evaluation and Grading

Evaluation Criteria Table

The final grades will be based on the following categories:

CATEGORY	WEIGHT
Employer Survey	40%
Diary	50%
Weekly Log	10%
Total	100%

Note: Students are responsible for abiding by the Plagiarism Policy and all policies applicable to the participating agency.

Grade Conversion Table

The final grades will be calculated from the percentages earned in the course, as follows:

A	90–100%	4.0
B+	85–89%	3.5
B	80–84%	3.0
C+	75–79%	2.5
C	70–74%	2.0
D+	65–69%	1.5
D	60–64%	1.0
F	<60%	0.0

(End of Syllabus)